

ANNEX 8. CITY OF MONTE SERENO

Monte Sereno is a city located in the foothills of the Santa Cruz Mountains about 10 miles southwest of San Jose (Figure 8.1). The city is named for the 2,580-foot El Sereno Mountain, upon the slopes of which the southern portion of the City is built. According to the 2010 census, the city had a population of 3,341 people. The community is entirely residential, with no commercial zoning and is characterized as a Silicon Valley bedroom community. Many municipal services are contracted with Los Gatos.¹

ORGANIZATION AND JURISDICTION

The City of Monte Sereno is governed by a publicly elected city council and has authority for General Plan land use planning, code adoption, and permit processing. The City of Monte Sereno does not have a city fire department; Monte Sereno is within the Central Fire Protection District.

State law designates all lands within the city limits of Monte Sereno as a Local Responsibility Area (LRA) for purposes of wildland fire protection. Most state fire prevention and defensible space laws do not apply within LRAs. Recent legislation requires state review and input on General Plan Safety Element updates where wildland fire is a hazard (Government Code Section 65040.20).

Fire protection services for Monte Sereno are provided by Santa Clara County Central Fire Protection District (Figure 8.2), including emergency's in State Responsibility Areas (SRAs) in unincorporated areas of the wildland urban interface (WUI), adjacent to Monte Sereno. To determine LRA and SRA designations of the community, please visit:

http://www.firepreventionfee.org/srviewer_launch.php

For more information, visit:

<https://www.sccgov.org/sites/dpd/DocsForms/Documents/WILDLAND-URBAN-INTERFACE-FAQ-PDF.pdf>

LAND USE PLANNING, GENERAL PLAN, BUILDING CODES, AND LOCAL HAZARD MITIGATION PLANS

Authority and jurisdiction for approving the General Plan and elements, and determining land use, community design, and building code adoption rests with the Monte Sereno City Council. The Local Hazard Mitigation Plan (LHMP) identifies hazards that exist in Monte Sereno that create risk to citizens and properties in Monte Sereno. WUI fires are a real and present danger to the western portions of Monte Sereno. This Community Wildfire Protection Plan (CWPP) identifies several goals related to functions the City of Monte Sereno has the authority to undertake.

¹https://www.sccgov.org/sites/oes/PlansPublications/Documents/Section15_MonteSereno_ReviewDraft_08292011.pdf

This CWPP may serve as basis for the WUI fire component for LHMP, General Plan, or General Plan element updates.

PLANNING TEAM PARTICIPATION

The Monte Sereno community is represented on the Core Team by representatives of the Santa Clara County Fire Department. The community has been engaged in the CWPP planning process through two rounds of workshops that have been held in Cupertino and focus on the Monte Sereno, Los Gatos, Cupertino, and surrounding WUI communities.

SUMMARY

Monte Sereno is listed as a Communities at Risk from wildfires on the Federal and/or California Fire Alliance list of Communities at Risk in Santa Clara County.

Wildfires occur in the vicinity of Monte Sereno and present a danger to people and properties within the city.

Mitigations can reduce the risk of injury and damage. Some mitigations are solely the responsibility of property owners, other mitigations require neighborhood level action, and some require city government action.

WUI AREA DESCRIPTION

WUI AREA DEFINED

The Monte Sereno WUI planning area is comprised primarily of Very High Fire Hazard Severity Zone (FHSZ) (Figure 8.1). The WUI area is best described as a wildland-urban intermix with homes scattered amongst wildland fuels.

FIRE HISTORY

For fire history information, please see Figure 3.5 in the main Santa Clara County Community Wildfire Protection Plan (CWPP) document.

HAZARDOUS FUEL CHARACTERISTICS

The Monte Sereno planning area comprises a range of vegetation communities that differ depending upon elevation, precipitation, and slope. Chaparral vegetation is often found on south facing slopes, where winter precipitation is relatively high, but dry summers are common. The chaparral will have long flame lengths under either moderate or extreme weather scenarios. The nature of these fuels is to burn quickly and intensely. Oak woodlands, comprised of a variety of oak species are also dominant in the area. A fire in these hardwood communities would likely be a surface fire with patches of active behavior and fairly low rates of spread. However, active fire behavior is possible in this vegetation type under extreme weather conditions, especially where there is high surface loading. Areas with increased fuel loading from dead and down materials may

experience crowning under the right conditions. The varied vegetation composition result in the Monte Sereno WUI comprising a range of wildfire hazard.

For fuel model information please refer to Section 4.6.3 and Figure 4.3 in Chapter 4 of the main CWPP document.

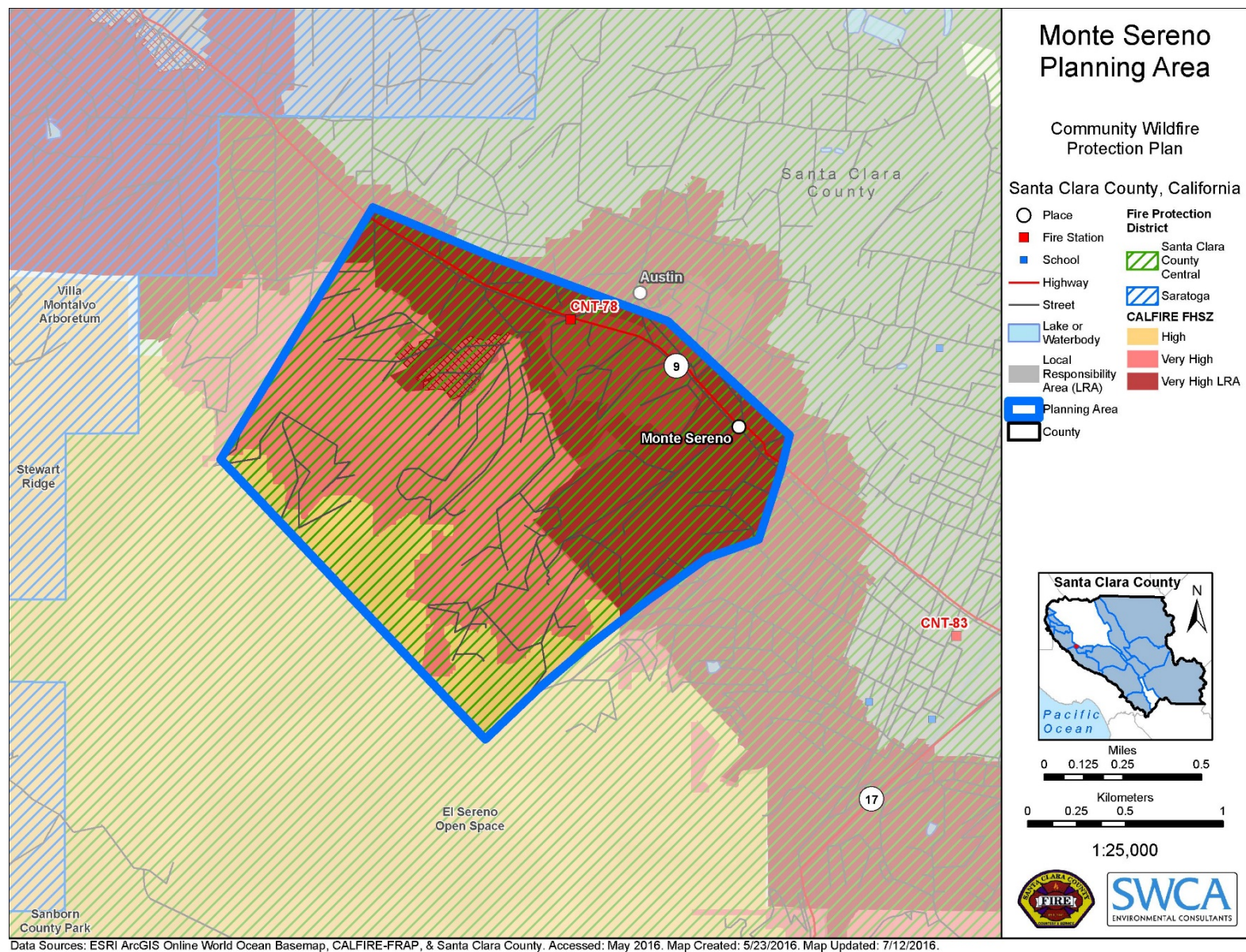


Figure 8.1. Monte Sereno planning area.

NEIGHBORHOOD AND STRUCTURAL CHARACTERISTICS

The Monte Sereno planning area is characterized as having lower slope and elevation than some of the surrounding planning areas but the varied topography is still a concern due to the influence it has on fire behavior. Adjacent lands on El Sereno Open Space (Midpeninsula Regional Open Space District [MROSD] managed property) have extremely varied topography and steep terrain.

Primary roads throughout the community are surfaced and well maintained (Figure 8.2); however, some homes are often located with steep driveways and have minimal turnaround space, posing a concern for emergency responders. Road networks can be difficult to navigate, particularly for responders who may not be familiar with the area. A number of dead-end spurs used to access homes are immediately adjacent to wildland fuels on El Sereno Open Space lands and this could create an evacuation concern.

Fuel loading is heavy around and between properties throughout much of the area. Property owners have completed some road side brushing to provide a buffer to the road but additional fuel treatments are needed to provide a buffer between homes and adjacent El Sereno wildlands that are primarily chaparral dominated (Figure 8.3) and therefore prone to extreme fire behavior.

A number of the homes in the planning area are newer construction and are therefore 7A compliant. Many have well maintained and landscaped yards that would provide a buffer to fire spread. Most homes have moderate defensible space (at least 30 feet) but some homes do not meet the necessary 70- to 100-foot space required under County code. It appears that many homes are landscaped by contracted landscaping companies; outreach regarding defensible space and non-flammable landscape vegetation could be targeted at those companies.

Response times would be good for most properties due to close proximity to a fire station, although egress concerns should be considered relating to traffic from evacuating residents and navigation of roads by large apparatus.

Water supply is good with a network of hydrants throughout the planning area.



Figure 8.2. Monte Sereno roads.



Figure 8.3. El Sereno Open Space.
Source: MROSD

EMERGENCY RESPONSE CAPACITY

The Santa Clara County Central Fire Protection District provides fire suppression services for Monte Sereno with response from the following fire stations:

- Quito Fire Station: 18870 Saratoga Los Gatos Road, Los Gatos
- Los Gatos Fire Station: 306 University Avenue, Los Gatos

All area fire departments cooperate in mutual aid agreements.

The City of Monte Sereno has carefully planned evacuation procedures and routes—for all the City’s neighborhoods—with the Fire District and Police Department.

PUBLIC EDUCATION AND OUTREACH PROGRAMS

The Monte Sereno community has a highly involved fire safety council, the Santa Clara County Fire Safe Council (<http://www.SCCFireSafe.org>). This organization provides information regarding chipping programs, defensible space mitigation, forest health issues, and much more. They also offer public meetings and forums to support wildfire awareness.

The Santa Clara County Fire Department, Fire Prevention Division provides a comprehensive fire and life safety educational program within Monte Sereno. More information can be found on its website:

<http://www.sccfd.org/community-outreach-safety-education/community-outreach-safety-education-overview>

The City of Monte Sereno provides comprehensive emergency preparedness information on its website: <http://www.montesereno.org/2214/Emergency-Preparedness>

POLICIES, REGULATIONS, ORDINANCES, AND CODES

Because much of Monte Sereno WUI is unincorporated, structures within the planning area are covered under the County’s WUI codes:

<https://www.sccgov.org/sites/dpd/Iwantto/PropertyInfo/Pages/WUI.aspx>

Residences within incorporated Monte Sereno would be subject to the Municipal Code of Monte Sereno. Much of the following information is taken from the Monte Sereno General Plan and the Santa Clara County Local Hazard Mitigation Plan.

GENERAL PLAN – SAFETY ELEMENT

With respect to wildfire hazard zones, the city has carefully planned evacuation procedures and routes—for all the City’s neighborhoods—with the Fire District and Police Department.

Special building regulations exist for the hazardous fire areas, including the requirement for fire retardant roofs. The City also requires anti-fire buffer areas and sufficient clearance around each house in the Wildland Urban Interface Zone. Finally, the City has a Weed Abatement Ordinance that requires property owners to remove weeds and other combustible materials that become a fire menace, or the City through partnership with Santa Clara County will abate the nuisance at the expense of the property owner.

GENERAL PLAN – HOUSING ELEMENT

Monte Sereno has adopted the 2013 editions of the California Building, Fire, Plumbing, Mechanical, Electric and Health and Safety Codes. The City has not adopted any amendments to these codes that significantly increase housing costs; the amendments recognize the City’s location

in a high fire hazard area near the San Andreas Fault and require fire-resistant roofs in the WUI fire area, additional bracing in certain situations, and fire sprinklers. The City Building Official regularly inspects development projects to ensure compliance with all applicable codes.

To reduce fire hazards, Monte Sereno adopted a weed and brush abatement ordinance. This ordinance, codified Municipal Code Section 10.17.010, broadly defines fire hazards as dry or dead shrubs, dead trees, combustible refuse and waste, and any vegetation that Santa Clara County Hazard Mitigation Plan could pose dangers. All residents are required by this ordinance to remove fire hazards from their property.

<http://www.montesereno.org/DocumentCenter/Home/View/1406>

Monte Sereno Municipal Code – Title 13 Subdivisions

Conflagration Areas: any proposed subdivision, any part of which is located in an area subject to potential danger of conflagration, as determined by the Fire Protection Agency, may be permitted only if water supply, fire hydrants, street improvements, ingress, egress and emergency access are sufficient and approved by the Fire Protection Agency.

Tree removal: <http://www.montesereno.org/DocumentCenter/Home/View/659>

HAZARD ASSESSMENT

The National Fire Protection Association Standard 1144 (NFPA 1144) community risk assessment completed for the Monte Sereno Community assigned the WUI community a risk rating of High with a score of 70 (<40 = low, >40 = moderate, >70 = High, >112 = Extreme) see tabulated list below. Factors that contributed to the risk are illustrated below. Averages are taken across the community for each of these parameters.

In addition to the on-the-ground hazard assessment, the CWPP also includes a Composite Fire Risk/Hazard Assessment which uses fire behavior modelling to determine potential fire behavior and is based on fuel characteristics, topography, weather, and fire history. The Composite Risk/Hazard Assessment for the planning area is shown in Figure 8.4. For more information on the methodology for this assessment please refer to Section 4.6.1 in Chapter 4 of the CWPP.

PARCEL LEVEL ASSESSMENT

A model for determining parcel level risk and effect of mitigations has been developed through this CWPP project. The model can use information available through public record for basic analysis but can be further refined with a site visit with property owner for a thorough analysis of risk score. The County will be seeking funding to fully implement this parcel level assessment in the future. The goal is for the property owner to be able to use this analysis to determine the most effective steps they can take to take to reduce their risk. For more information refer to Chapter 4 in the countywide CWPP document.

*Santa Clara County Community Wildfire Protection Plan
Annex 8 – City of Monte Sereno*

Parameter	Condition	Rating
Access	One road in and out	-
	Narrow road width	-
	Surfaced road with greater than 5% grade	+
	Poor fire access, dead end spurs, lack turnaround	-
	Street signs are present, some are non-reflective	+/-
Vegetation	Adjacent fuels: Medium	+/-
	Defensible space: >30 feet <70 feet around structure	+/-
Topography within 300 feet of structure	21%–30 %	-
Topographic features	Moderate to high concern	+/-
History of high fire occurrence	Low	+
Severe fire weather potential	Low	+
Separation of adjacent structures	Limited separation	-
Roofing assembly	Class B	+/-
Building construction	Non-combustible siding, combustible deck	+/-
	Building set back: variable, most <30 feet to slope	+/-
Available fire protection	Water: hydrants	+
	Response: Station <5 miles from structure	+
	Internal sprinklers: some newer 7A compliant homes	+/-
Utilities	One above and one below ground	+/-
Risk Rating- High (70)		

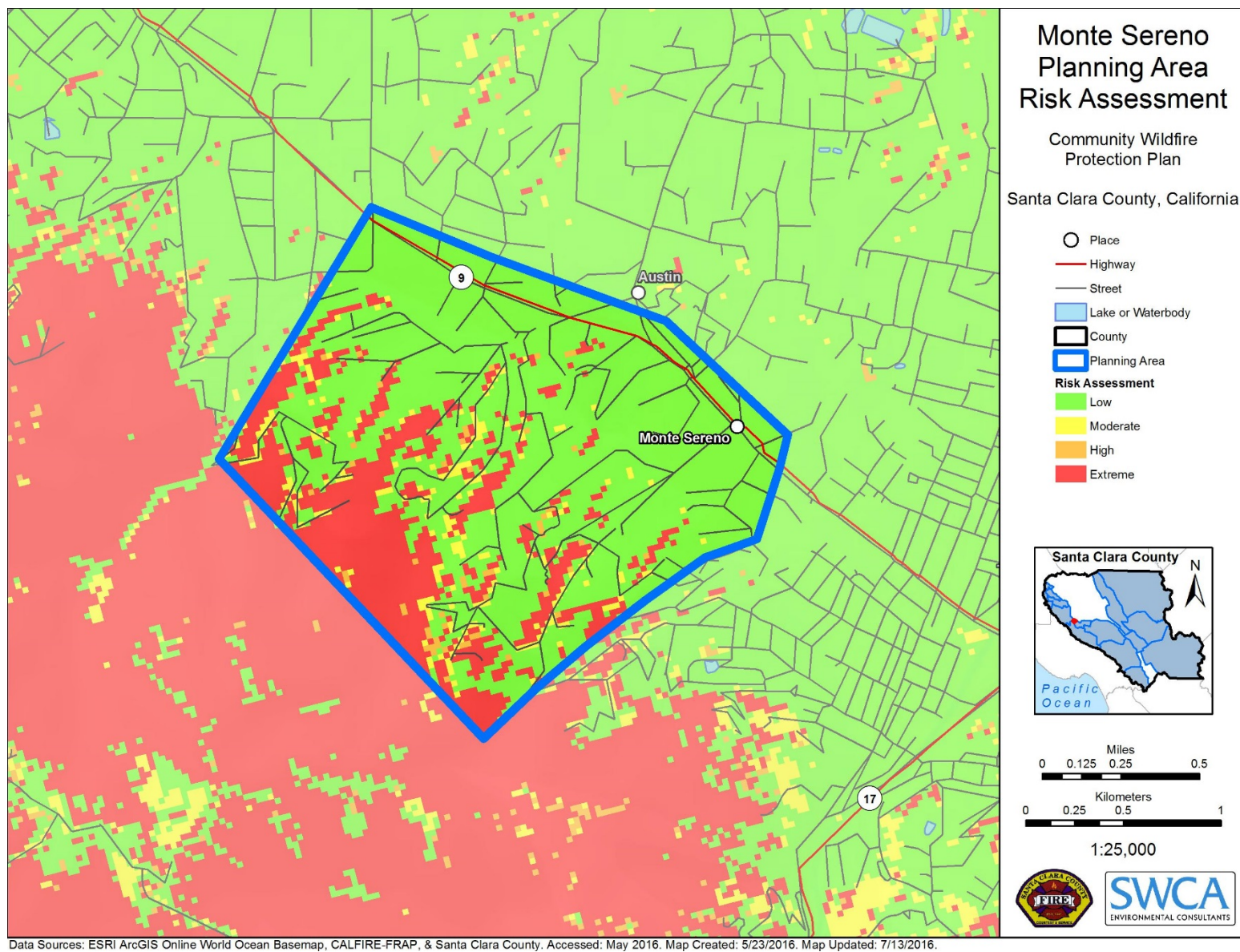


Figure 8.4. Composite Fire Risk/Hazard Assessment for the Monte Sereno planning area.

IDENTIFY CRITICAL INFRASTRUCTURE AND COMMUNITY VALUES AT RISK

Critical utility infrastructure, such as electric power supply lines, substations, and natural gas lines, are essential to supply residents and businesses with services that are in some cases critical to health and life safety. Wildfire is a significant threat to the electric utility supply.

The planning area is adjacent to the El Sereno Open Space area that is valued for recreational use and for its natural resources. The Open Space area has potential for extreme wildfire behavior due to the dominance of chaparral vegetation across the area and the varied topography. Fuel treatments that focus on protection of adjacent properties will be paramount to mitigate this wild fire risk, as well as to protect the valued resources within El Sereno.

Other community values at risk include life safety, homes and property values, infrastructure, recreation and lifestyle, wildlife habitat, watershed protection, and environmental resources.

MITIGATION PROJECTS AND PRIORITIZATIONS

The following project matrices have been developed by the community and Core Team to direct specific project implementation for communities in the Monte Sereno WUI (Table 8.1–Table 8.5). The matrices below are tiered to the strategic goals presented in the body of the CWPP through project IDs in the first column of each matrix. The matrices are broken down into projects for addressing hazardous fuels, structural ignitability, public education and outreach, fire response capability, and planning. Due to the large area of land managed by the MROSD (El Sereno Open Space) adjacent to the city, the reader is directed to the MROSD agency annex (Annex 16).

Table 8.1. Recommendations for Public Outreach and Education in the Monte Sereno Planning Area

ID MS	Project	Presented by	Target Date	Priority (1,2,3)	Resources Needed	Serves to
Strategic Goal: EO1- Educate citizens on how to achieve contemporary WUI code compliance in retrofits/cost: benefit ratio. Provide workshops and/or demonstration site. and EO5- Emergency preparedness meetings. Use American Red Cross volunteers and other preparedness experts. Attend community functions and hold special meetings to provide guidance for creating household emergency plans. Use Ready, Set, Go! program.						
MS-EO1.1	Wildfire Preparedness and WUI Code workshops	Fire Safe Councils, County Fire	Within 2 years	1	Workshop expenses, personnel. Workshop venues. Demonstration site. Strategize on avenues for engaging the public.	Increase compliance with County code. Reduce fire risk level for individual parcels and community as a whole.
Strategic Goal: EO3- Organize a community group made up of residents and agency personnel to develop materials and communicate relevant defensible space messages. Could coordinate with fire departments or Fire Safe Council.						
MS-EO3.1	Form community working group for defensible space outreach	Fire Safe Council, fire departments, local residents, Eagle Scouts, High School Community Volunteer Program	Within a year	1	Funding to help cover costs of materials (green waste removal or chipper) and participation. Hire contractor trained in defensible space practices.	Engage diverse stakeholders in reaching out to community members and encourage defensible space practices. Empower homeowners to make affordable and effective changes to reduce the vulnerability of individual homes.
Strategic Goal: EO4- Media involvement. Develop a local newspaper column that provides fire safety information, promotional information for volunteer fire departments, fire announcements, and emergency planning.						
MS-EO4.1	Develop a local newspaper column or community newsletter for the Monte Sereno community that provides fire safety information, promotional information for fire departments, fire announcements, and emergency planning.	City of Monte Sereno	Within 1 year	1	Columns, information, and articles to be provided by fire departments, local residents, SCCFSC.	Protect communities and infrastructure through increasing public awareness and providing a channel for information regarding emergency fire response.

Table 8.2. Recommendations for Reducing Structural Ignitability in the Monte Sereno Planning Area

ID	Project	Presented by	Programs Available	Description	Priority (1,2,3)	Timeline
Strategic Goal: SI5- Adopt landscape standards for recommended plant landscape materials.						
MS-SI5.1	Adopt landscape standards for recommended plant landscape materials	Fire Safe Councils to lead	Research Firewise plants suitable for the region. Develop plant list, poster materials and research demonstration site. Firewise Communities USA: www.firewise.org	Educate property owners, landscape firms and landscape architects in appropriate ornamental plantings, mulches, and landscape design/ maintenance in WUI areas.	3	Next 2 years
Strategic Goal: SI6- Develop landscape contractor maintenance program for “Right Plant-- Right Place” and maintenance						
MS-SI6.1	Develop landscape contractor non-flammable plant list.	Fire Safe Councils to lead in cooperation with local homeowner association (HOA)	Firewise Communities USA: www.firewise.org	Educate property owners, landscape firms and landscape architects in appropriate ornamental plantings, mulches, and landscape design/ maintenance in WUI areas. Work with HOA.	2	Next 2 years
Strategic Goal: SI8- Interactive tool for citizens to use on line, ID their property and what hazard/risks exist and mitigations they can apply to improve their survivability.						
MS-SI8.1	Work with County Fire to develop parcel level application of CWPP risk assessment using Interra software.	Santa Clara County Fire Department with revised Interra contract	Interra	County Fire to pursue funding to increase contract provisions with Interra to provide public facing tool. Simplify tool and provide easy to follow instructions. Could develop YouTube informational video	1	Next 3 years
Strategic Goal: SI11- Implement spring community yard clean-up days. In combination with Fire Safe Council chipper program.						
MS-SI11.1	Implement community work day to encourage yard clean-up and defensible space maintenance	County Fire, Municipal Fire Departments, CAL FIRE, Fire Safe Councils	Fire Safe Council chipping program Ready, Set, Go CAL FIRE	A community-led day of yard clean-up with fire mitigation in mind would encourage large numbers within the community to carry-out mitigation measures and implementation of defensible space.	2	Next 2 years

Table 8.3. Recommendations for Improving Firefighting Capabilities in the Monte Sereno Planning Area

ID	Project Description	Fire Department/Agency	Benefits of the Project to the community	Timeline	Priority (1,2,3)	Resources/funding sources available
Strategic Goal: FC5- Develop WUI preplans and accompanying evacuation plans for all WUI areas in Santa Clara County using standardized format						
MS-FC5.1	Develop WUI preplans and accompanying evacuation plans for Monte Sereno WUI	County Fire/CAL FIRE/Fire Safe Councils	Helps fire response agencies pre-plan for evacuations. Helps identify areas where mitigation measures are needed to facilitate safe evacuation. Helps establish consistent model across all agencies.	1 year	1	Grants: Federal Emergency Management Agency (FEMA), California Fire Safe Council (CA FSC), Department of Homeland Security (DHS)
Strategic Goal: FC11- Investigate and potentially install Fire Detection Robots to alert departments of a fire start in remote areas.						
MS-FC11.1	Investigate installation of fire detection robots on El Sereno Open Space lands adjacent to Monte Sereno.	County Fire	Uses technology for single-tree wildfire detection solution that help forestry agencies and fire protection professionals manage the risks of fire damage cost-effectively.	Within 2 years	1	Private companies provide robotic technology
Strategic Goal: FC15- Where Open Space and Park Agencies establish trail head parking areas, operating facilities such as horse stables and camping areas that will increase public access add large capacity water tanks and hydrants for wildfire protection.						
MS-FC15.1	Installation of water tanks on El Sereno Open Space property for fire suppression purposes.	MROSD (will follow local building codes)	Alleviates public and agency concern for limited water supply in remote areas.	Within 5 years	3	This could eventually be amended into the building code for Santa Clara County.

Table 8.4. Fuel Reduction Treatment Recommendations in the Monte Sereno Planning Area

ID	Project Description	Location and Responsible Party	Method	Serves to:	Timeline for Action	Priority (1,2,3)	Monitoring	Resources/funding sources available
Strategic Goal: FR1- Incorporate single track trails into fire defense system where practical								
MS-FR1.1	Form a community working group to work with MROSD to collaboratively develop fuel treatments plans on El Sereno Open Space lands. Prioritize treatments along existing trails (for example along Overlook Trail) that could help to provide a more substantial fuel break and break up the continuity of fuels.	MROSD: Trails that run adjacent to community, i.e. Overlook Trail on El Sereno Open Space. See KMLs for planning area for spatially delineated projects.	Detailed analysis would be needed in development of treatment location to ensure protection of natural resources.	Provide access when fires occur to reduce spread Enhance Community fire defense by breaking up fuel continuity.	Ongoing-LONG RANGE	1	Regular monitoring to determine project success in reducing fuel loading and enhanced access.	Grants: CA FSC; California Forest Improvement Program (CFIP); Natural Resource Conservation Service (NRCS), FEMA, Green House Gas Reduction Fund (GHGRF)
Strategic Goal: FR7- Develop roadside fuel treatment program, including suite of methods available and sustainability mechanism								
MS-FR7.1	Implement roadside brushing/mowing throughout community to increase buffer from wildfire ignitions and provide for safe evacuation.	County and city road agencies; private road associations, PG&E, cable and phone companies.	Determine suite of treatment methods allowed and restriction for roadside hazard reduction including mowing, mastication, chemical, plantings, mulching, etc. Develop treatment plan and rotation schedule for roadside treatments, focusing of primary evacuation or access/egress corridors.	Reduce fuel loading around roads and highways to ensure safe passage of vehicles in event of evacuation and reduce unplanned ignitions from vehicles and highway users.	Within 2 years	1	Regular maintenance schedule should be implemented to ensure clearance levels are maintained. Develop standards for road crews.	Grants: CA FSC; CFIP; NRCS, FEMA, GHGRF

*Santa Clara County Community Wildfire Protection Plan
Annex 8 – City of Monte Sereno*

ID	Project Description	Location and Responsible Party	Method	Serves to:	Timeline for Action	Priority (1,2,3)	Monitoring	Resources/funding sources available
Strategic Goal: FR9- Establish assistance program for hazardous fuel reduction for physically or fiscally challenged parcels								
MS-FR9.1	Establish assistance program for hazardous fuel reduction and defensible space for elderly or physically challenged individuals within Monte Sereno	Monte Sereno neighborhood groups, HOAs.	Identify barriers to achieving parcel level defensible space and establish assistance program of resources: education, consulting, guidance, people, funding.	Ensure that individual properties with poor property hygiene do not put adjoining properties at risk in event of wildfire. For residents who are not capable of implementing good property hygiene.	Within 2 years	2	Establish levels of participation by assistance type	Grants: CA FSC; CFIP; NRCS, FEMA, GHGRF
Strategic Goal: FR 11- Create Sustainable programs for creating Defensible Space at the parcel Level.								
MS-FR11.1	Create Sustainable programs for creating Defensible Space at the parcel Level within Monte Sereno.	Home Owner, Fire Safe Councils, Home Owner Associations, Santa Clara County Fire Department, Administrators for SRA fee distributions.	Example projects - Curbside green waste pickup programs, community chipping piles, drive-up chipping, on site chipping.	Ensure that defensible space actions are sustained in all communities	Within 1 year	1	Regular maintenance schedule should be implemented to ensure clearance levels are maintained.	Grants: CA FSC; CFIP; NRCS, FEMA, GHGRF

Table 8.5. Recommendations for General Planning Projects in City of Monte Sereno

ID	Project Description	Method	Timeline for Action	Priority (1,2,3)	Monitoring/Sustainability	Resources/Funding Sources Available
Strategic Goal GP1: Ensure project sustainability.						
MS- GP1.1	The CWPP serves as the wildfire component of Monte Sereno LHMP and General Plan - Safety and other element amendments.	Work with city planning to identify timeline for incorporation in next LHMP update. Aim to have the strategic-level CWPP incorporated into the Safety Element of the General Plan when the safety element is next revised. Getting it into the General Plan is equivalent to getting the CWPP adopted.	Next 5 years	2	The core group of stakeholders would need to ensure that the document is kept relevant in that time and position it for incorporation.	Internal funding
MS- GP1.2	Ensure project sustainability.	Have a target date for updating the datasets used in the risk assessment model and re-running the model. Establish trigger points for updating CWPP. Make contact with Santa Clara County Fire Department to note your interest in participating in the project and identify CWPP meeting schedule.	Annually	1	Establish annual oversight of the CWPP and project status. Get buy-in from Core Team members for long-term commitment to CWPP review.	Internal funding
MS- GP1.3	Designate a member to the Countywide CWPP Core Team for CWPP updates.	Identify staff and convene a kickoff of the working group and identify tasks and goals for CWPP updates.	Meet quarterly	1	Commit to attendance at one CWPP meeting annually.	Internal funding
MS- GP1.4	Develop methods for sustainability of hazardous fuel reduction.	Develop action for city council to adopt method to fund sustainable hazardous fuel maintenance (such Mello-Roos Community Facility Districts for new subdivisions).	As needed	2	Enactment of policy.	Internal funding
Strategic Goal GP2: Parcel Level Defensible Space Inspection Task Force						
MS-GP2.1	Join countywide task force to do parcel level inspection work to enhance model; utilize portable data collection and ArcGIS as analysis tools.	Carryout parcel level assessments to enhance risk assessment model components at a finer scale. Add data to model and re-run as necessary.	2 years	1	Set target number of parcels to be assessed each year. Review number of parcels assessed each year at annual CWPP meeting.	Internal funding
Strategic Goal GP3: Develop countywide standard and method for continued data gathering and risk analysis.						
MS-GP3.1	Use a countywide standard and method for continued data gathering and risk analysis.	Conduct funding to purchase a commercial application, such as Fulcrum, that provides a standard data collection platform that could be used on a smart phone/tablet.	2 years	1	Annual review of progress as part of Core Team.	California Fire Safe Council clearinghouse grants; internal funding

*Santa Clara County Community Wildfire Protection Plan
Annex 8 – City of Monte Sereno*

ID	Project Description	Method	Timeline for Action	Priority (1,2,3)	Monitoring/Sustainability	Resources/Funding Sources Available
Strategic Goal GP5: Add hyperspectral and LiDAR imaging to periodic aerial photography flights.						
MS-GP5.1	Seek LiDAR and hyperspectral imagery for aerial photography of Monte Sereno.	<p>Work in conjunction with the City Planning, County Assessor, or others to add additional sensing cameras to aerial photo flights.</p> <p>Hyperspectral and LiDAR can provide in depth identification and analysis of hazards and risks.</p>	1–3 years	1	Periodic new flights to update data sets.	Grants: Federal Emergency Management Agency, Department of Homeland Security, Greenhouse Gas Reduction